



FOR LEASE

RETAIL – MIXED USE – EAT STREET

113 East 26th Street MINNEAPOLIS, MN 55404

SQUARE FOOTAGE:

- 1st Floor Retail in newer mixed use project – a block from Eat Street
- Suite 110 – 2,113 SF
- Suite 114 – 1,777 SF

PARKING:

- Lots of street parking available

FEATURES:

- 1st floor retail/food space in a mixed use apartment building on the corner of Stevens and 26th. Tilt Pinball bar is going to move in November.
- In the shadow of the Main & Main of Eat Street
- First floor retail space in newer mixed use project
- On busy feeder street (26th St)



**FOR MORE INFORMATION
PLEASE CONTACT:**

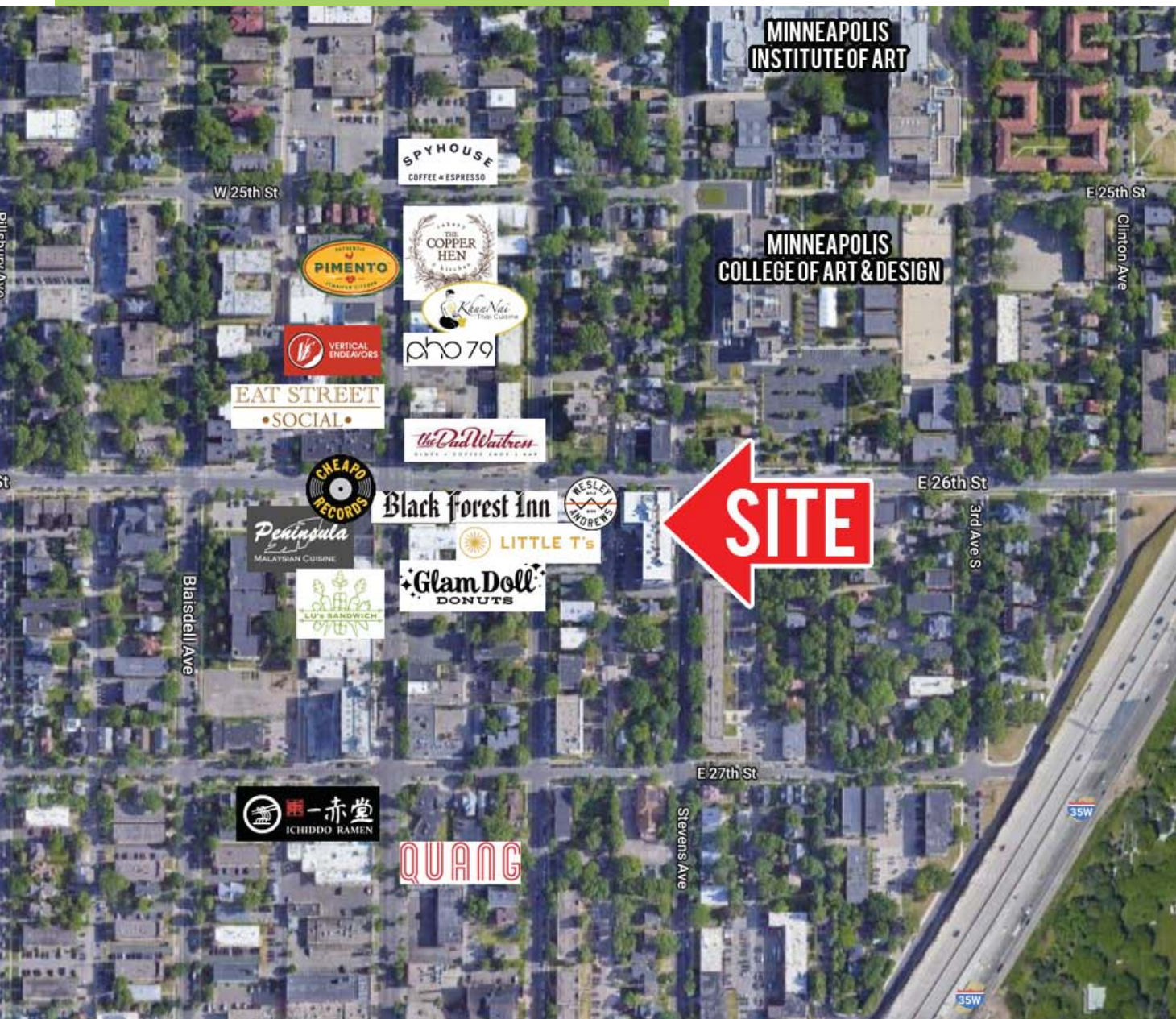
Mike Belzer
Associate
651.226.1838 Call or Text
mike@bloomcommercial.com

Josh Bloom
Principal
651.207.3157 Call or Text
josh@bloomcommercial.com

EST. DEMOGRAPHICS	1 MILE	3 MILES	5 MILES
Population	57,016	264,691	521,134
Employee Population	35,275	270,404	420,517
Median HH Income	\$50,842	\$68,354	\$77,991
TRAFFIC COUNTS			
East 26th St.	Nicollet Ave S.	Stevens Ave. S.	I-35W
10,300 VPD	8,500 VPD	3,950 VPD	187,000 VPD

RETAIL-MIXED USE-EAT STREET FOR LEASE

113 East 26th Street MINNEAPOLIS, MN 55404



AREA TENANTS:

- Black Sheep, Eat Street Social, The Bad Waitress, Black Forest Inn, Glam Doll, Spyhouse, Wesley Andrews Coffee, The Prodigal Public House, Little Tijuana, Pimento, Vertical Endeavors, Ichiddo Ramen, Quang, MIA, & MCAD

Mike Belzer
Associate
651.226.1838 Call or Text
mike@bloomcommercial.com

Josh Bloom
Principal
651.207.3157 Call or Text
josh@bloomcommercial.com

Bloom Commercial Real Estate
10050 Crosstown Circle
Suite 600
Eden Prairie, MN 55344
www.bloomcommercial.com

This document has been prepared by BCRE for advertising and general information only. BCRE makes no guarantees, representations or warranties of any kind, expressed or implied, regarding the information including, but not limited to, warranties of content, accuracy and reliability. Any interested party should undertake their own inquiries as to the accuracy of the information. BCRE excludes unequivocally all inferred or implied terms, conditions and warranties arising out of this document and excludes all liability for loss and damages arising there from.

