



FOR LEASE

333 ON THE PARK

333 North Sibley Street ST. PAUL, MN 55101

FOR LEASE:

1,733 sf on 1st Floor

FEATURES:

- Located on the corner of Sibley Street & 5th Street East in the heart of the Artist District between Mears Park and Union Depot.
- 333 on the Park is situated one block from the light rail transit Green Line, an extensive bus system, the Amtrak train station and within walking distance to the Farmers Market, St. Paul Saints CHS Field and the Xcel Center.



**FOR MORE INFORMATION
PLEASE CONTACT:**

Josh Bloom
Principal
651.207.3157 Call or Text
josh@bloomcommercial.com

Tim Bloom
Principal
612.701.5151 Call or Text
tim@bloomcommercial.com

EST. DEMOGRAPHICS	1 MILE	2 MILES	3 MILES	5 MILES
Population	13,874	77,584	169,033	359,309
Employee's	81,153	114,732	142,344	225,466
Median HH Income	\$31,282	\$38,786	\$43,593	\$51,493

333 ON THE PARK

333 North Sibley Street ST. PAUL, MN 55101

FOR LEASE

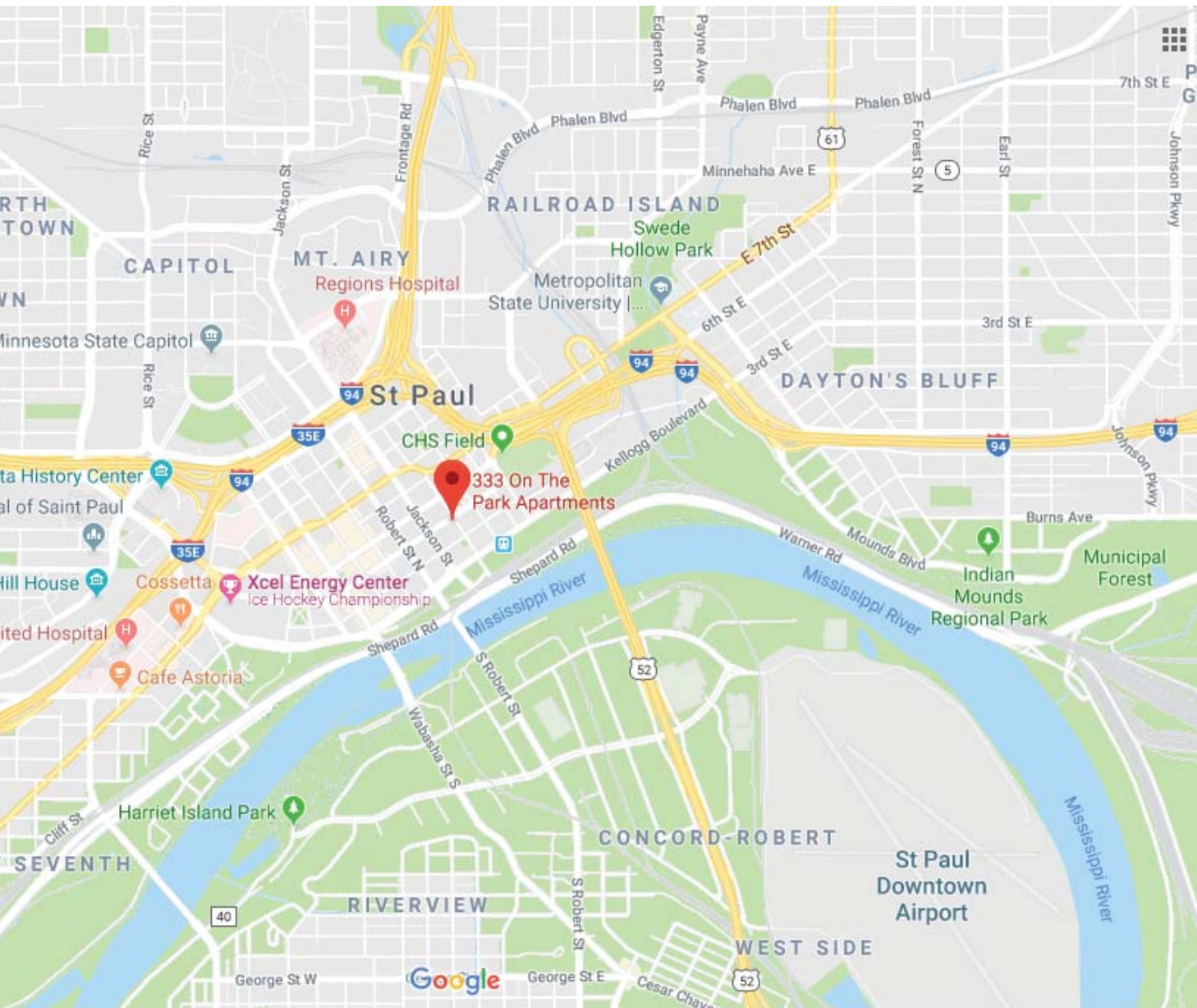
FOR LEASE:

1,733 sf on 1st Floor

FEATURES:

- The area hosts a vibrant collection of retail shops, cafes, bars and restaurants frequented by a heavy daytime work population, over 81,000 employees in immediate area. The area has also seen strong growth in residential development.
- Perfect space for retailer, medical, or creative office user on a busy visible corner.
- This commercial space sits on main floor of 134 luxury apartments
- Skyways Connected
- www.333onthepark.com is the website to see apartments

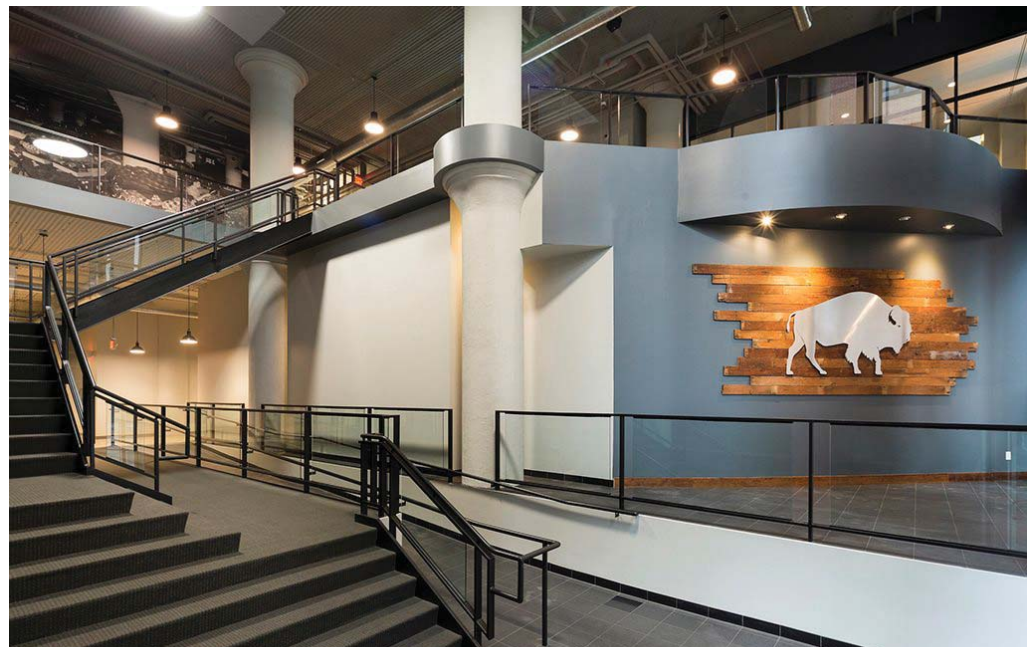
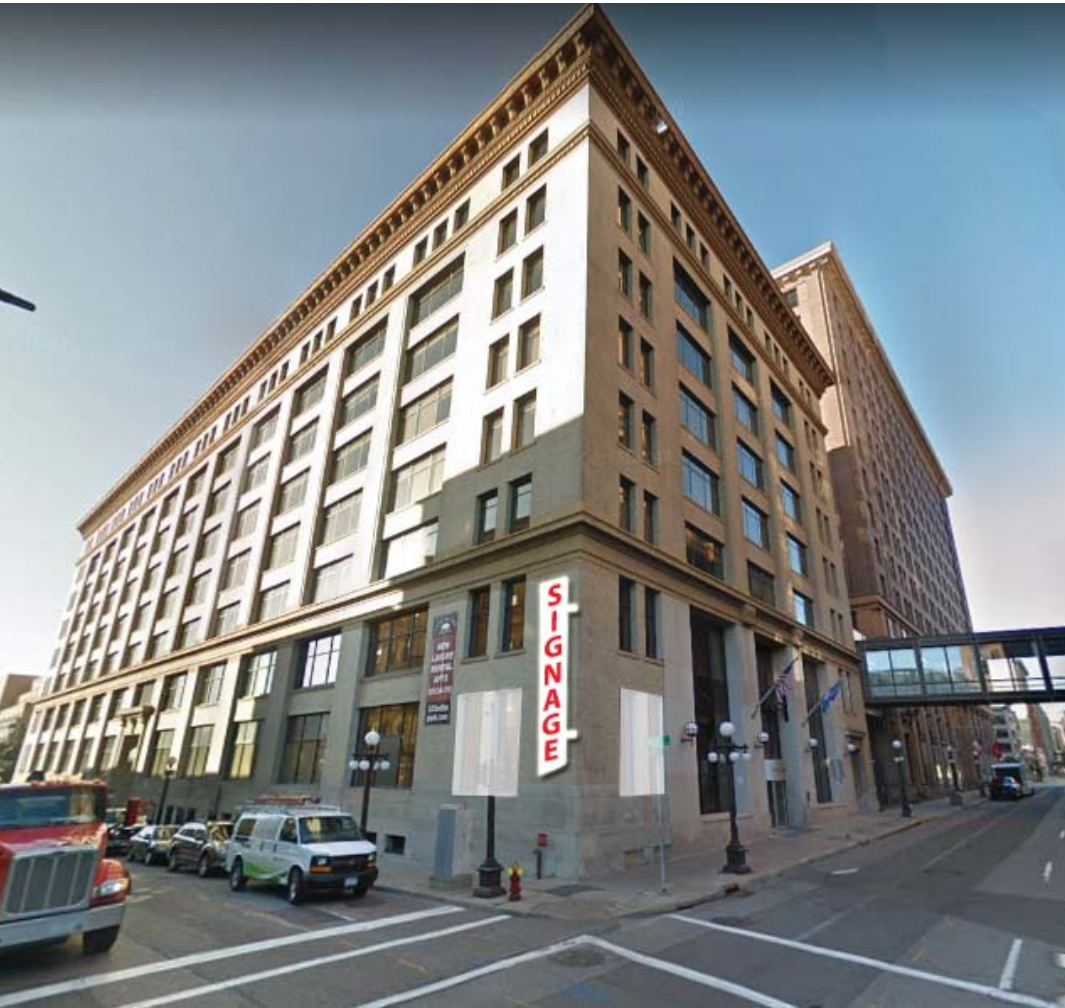
Bloom Commercial Real Estate
80 South Eighth Street
Suite 1850 – IDS Center
Minneapolis, MN 55402
www.bloomcommercial.com



333 ON THE PARK

333 North Sibley Street ST. PAUL, MN 55101

FOR LEASE




BCRE
bloom commercial real estate